



Harvard Road, London, W4 4EA
Guide Price £1,695,000

WHITMAN & CO.

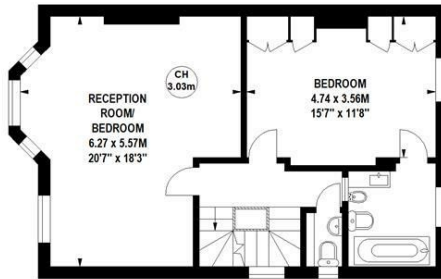
SALES · LETTINGS · COMMERCIAL

- Semi detached Victorian house
- 75' landscaped garden
- 18'x14' garage
- Generous rooms with high ceilings
- Host of original features
- No chain

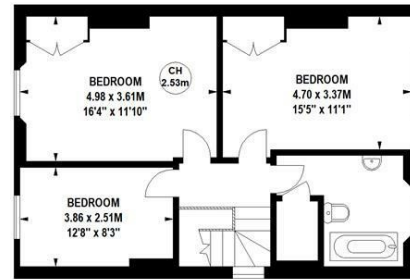
Tenure - Freehold
Local authority - Hounslow
Council tax - Band G

Harvard Road, W4

Approximate gross internal area
200.85 sq m / 2162 sq ft
(Excluding Garage)
Approximate Garage Area
25.18 sq m / 271 sq ft

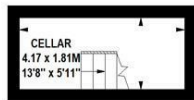


First Floor

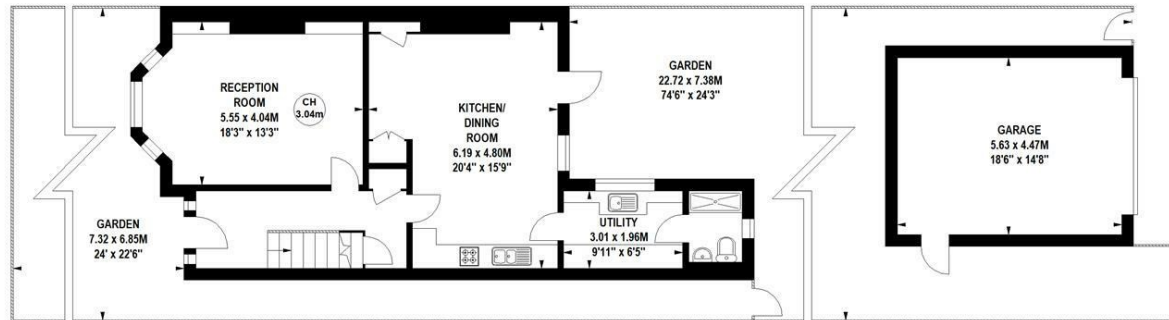


Second Floor

Key :
CH - Ceiling Height



Basement



Ground Floor

Not to scale, for guidance only and must not be relied upon as a statement of fact.
All measurements and areas are approximate only

THE PROPERTY

A spacious five bedroom semi detached period family house ideally located in the tree lined residential road with the added benefit of a large garden and garage. This fantastic property comprises a master bedroom with ensuite bathroom, four further bedrooms, large loft, bathroom, cloakroom, large entrance hall, 18' reception room, host of original features, 20' kitchen/breakfast room, utility room, wet room, cellar, private 75' landscaped garden and 18'x14' garage. Situated within close proximity of tube, bus and rail facilities as well as the extensive range of shops, bars and restaurants on Chiswick High Road. No chain.

SITUATION



5-7 Turnham Green Terrace, Chiswick, London, W4 1RG

Tel 020 8747 8800

E-mail sales@whitmanandco.com

Website www.whitmanandco.com